



vpnlux

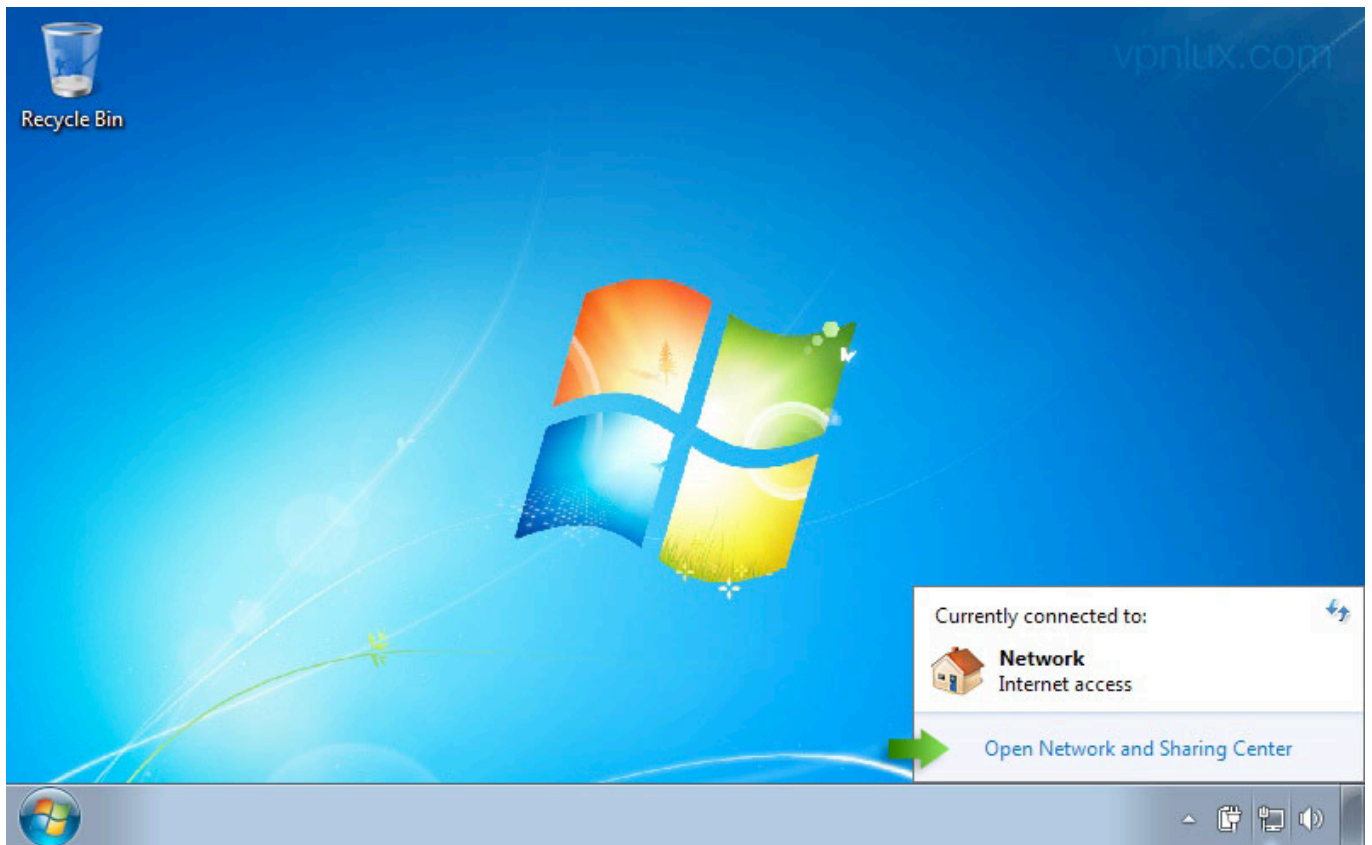


Setup PPTP VPN on Windows 7

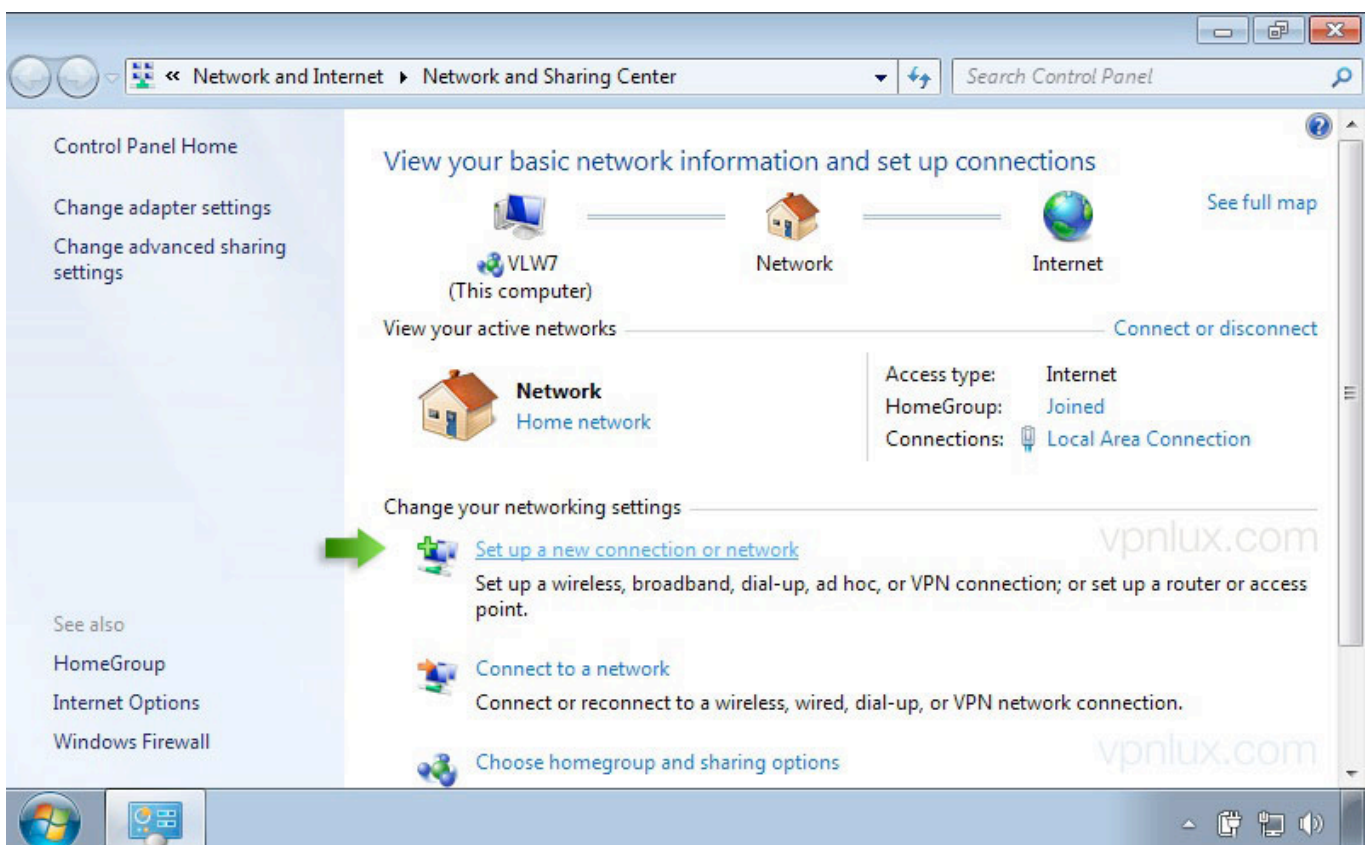
English version

CREATE VPN CONNECTION

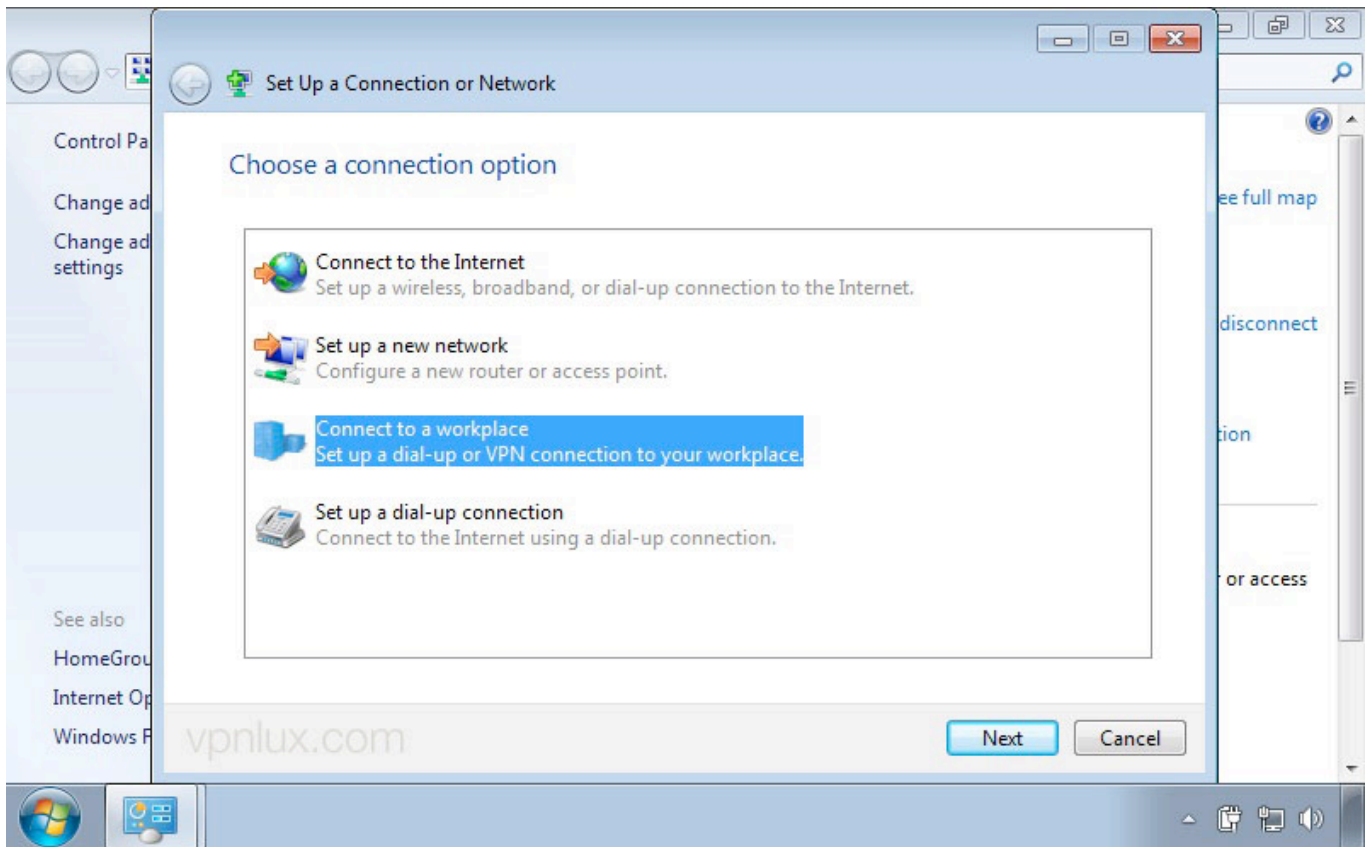
STEP 1. Click on the Network icon in system tray and **Open Network and Sharing Center**



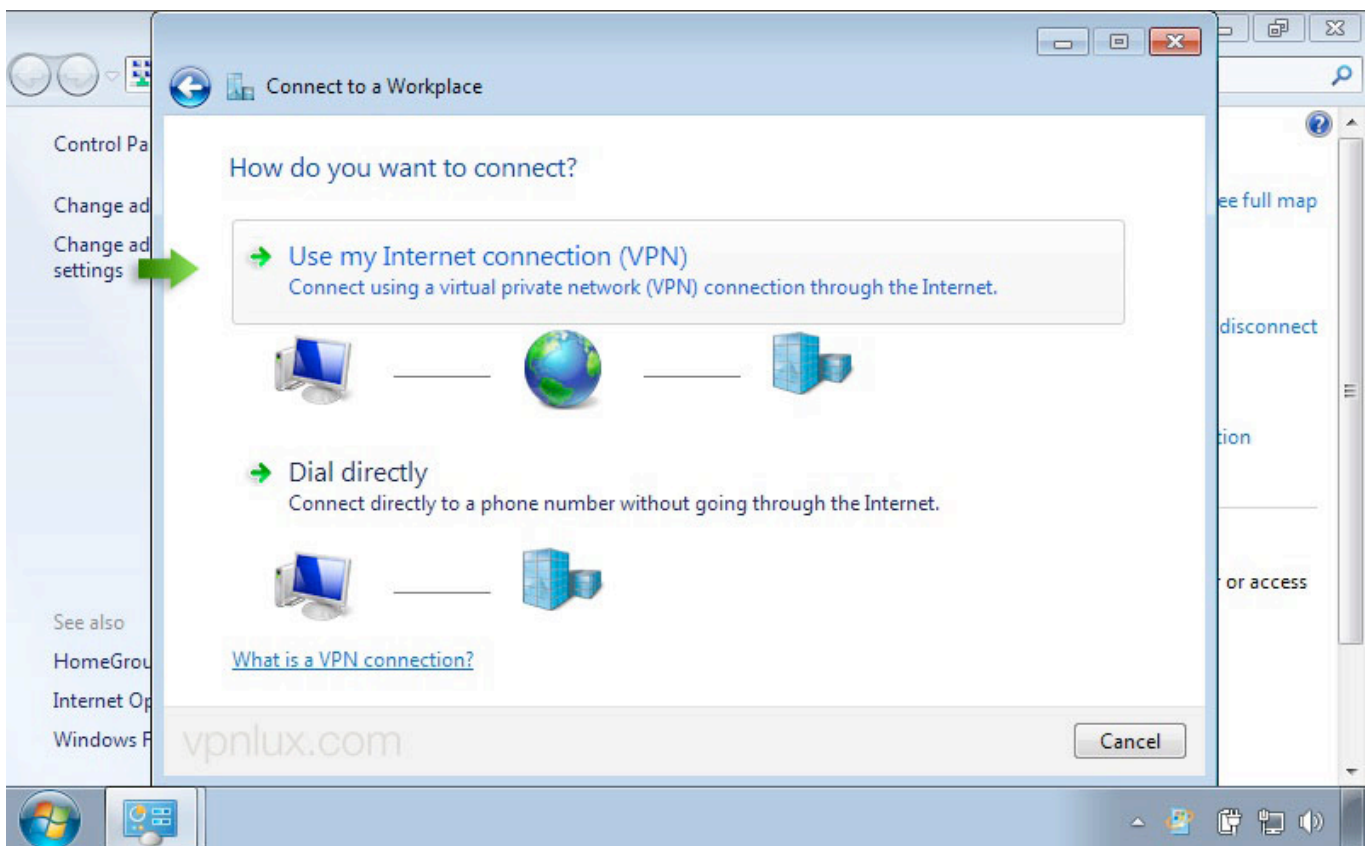
STEP 2. Click **Set up a new connection or network**



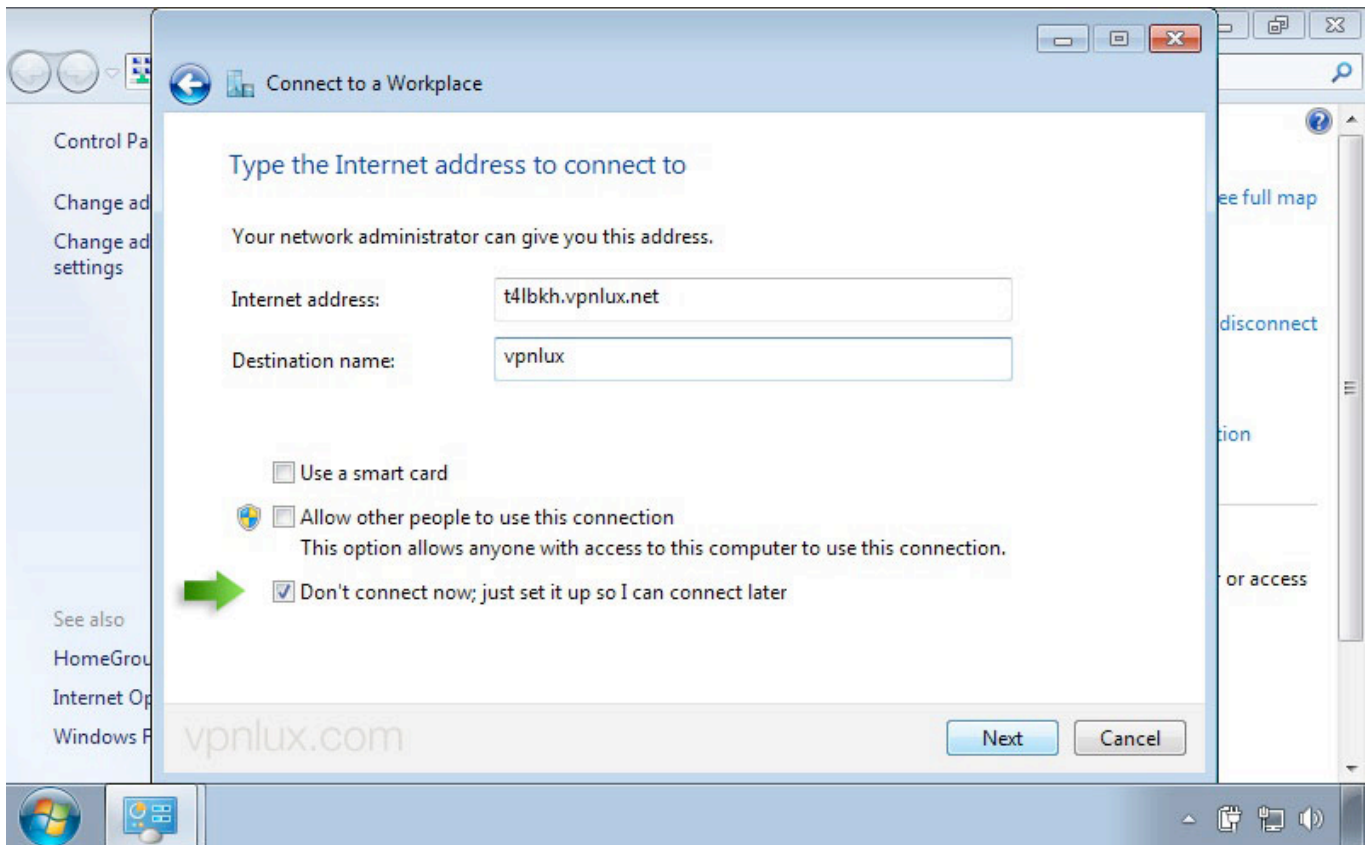
STEP 3. Select **Connect to a workplace** and **create a new connection** (If you will see a new window)



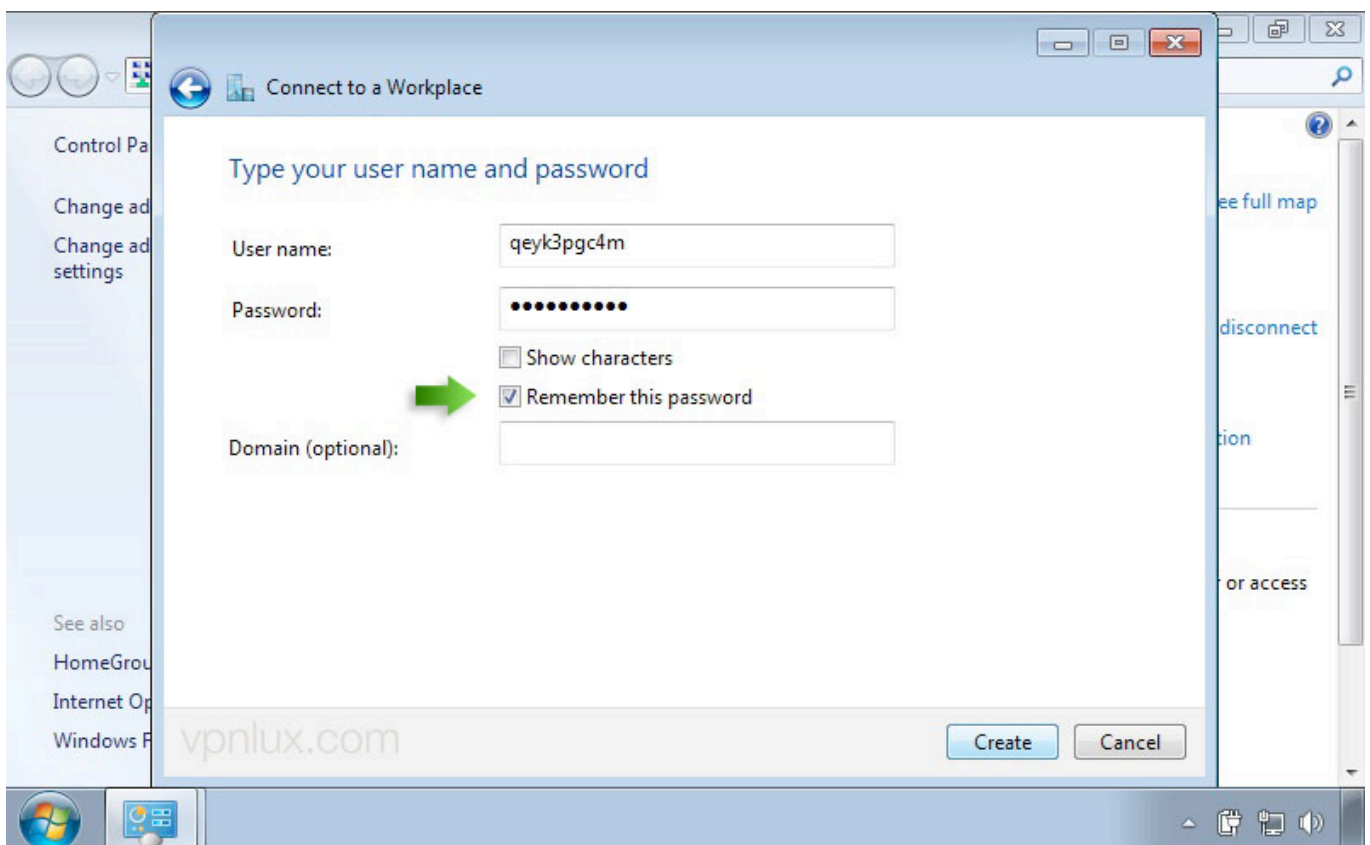
STEP 4. Click **Use my Internet connection (VPN)**



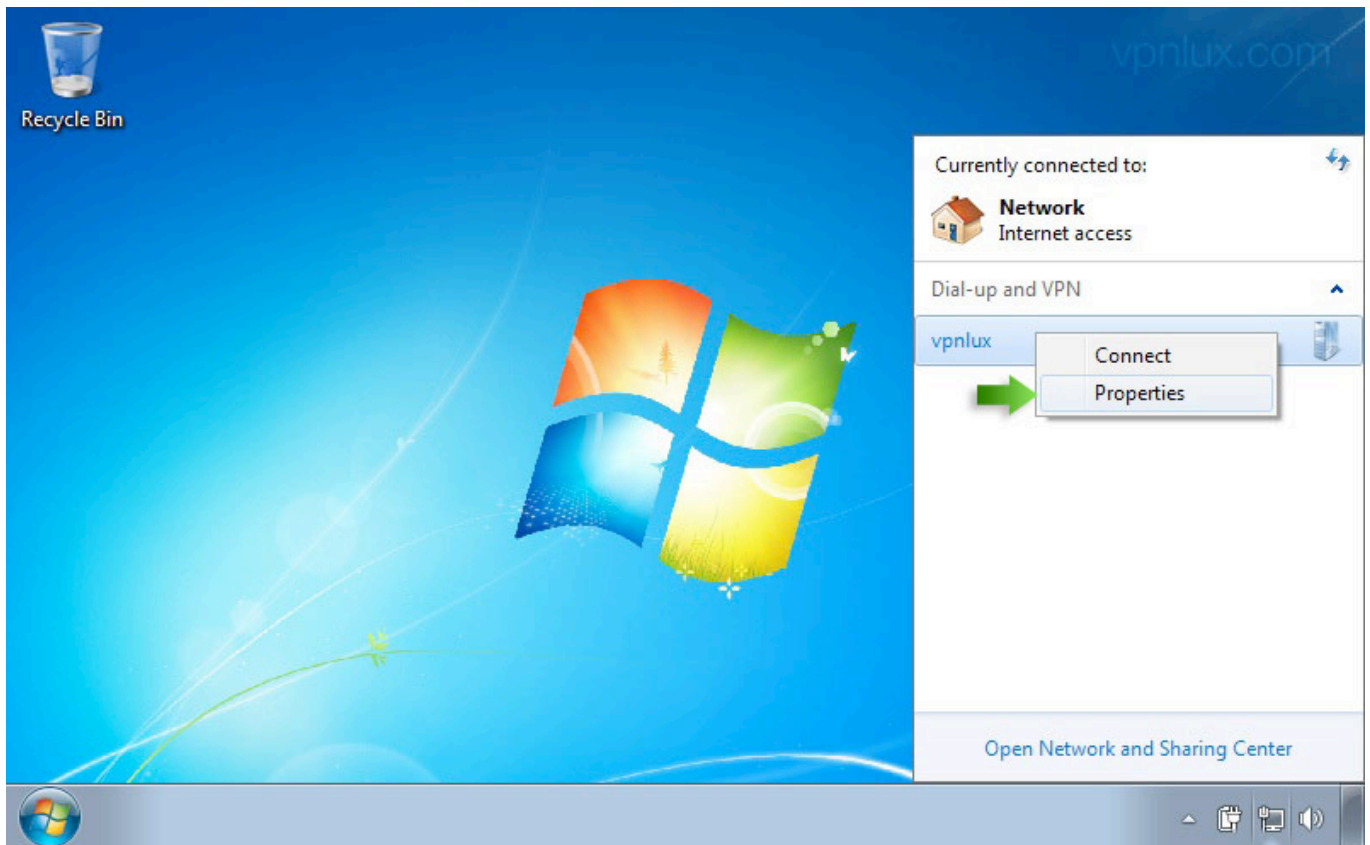
STEP 5. Enter your **Hostname** (look PPTP info text file in control panel) as **Internet address** and give the connection a name in **Destination name** field. Select the **Don't connect now** checkbox and click **Next**



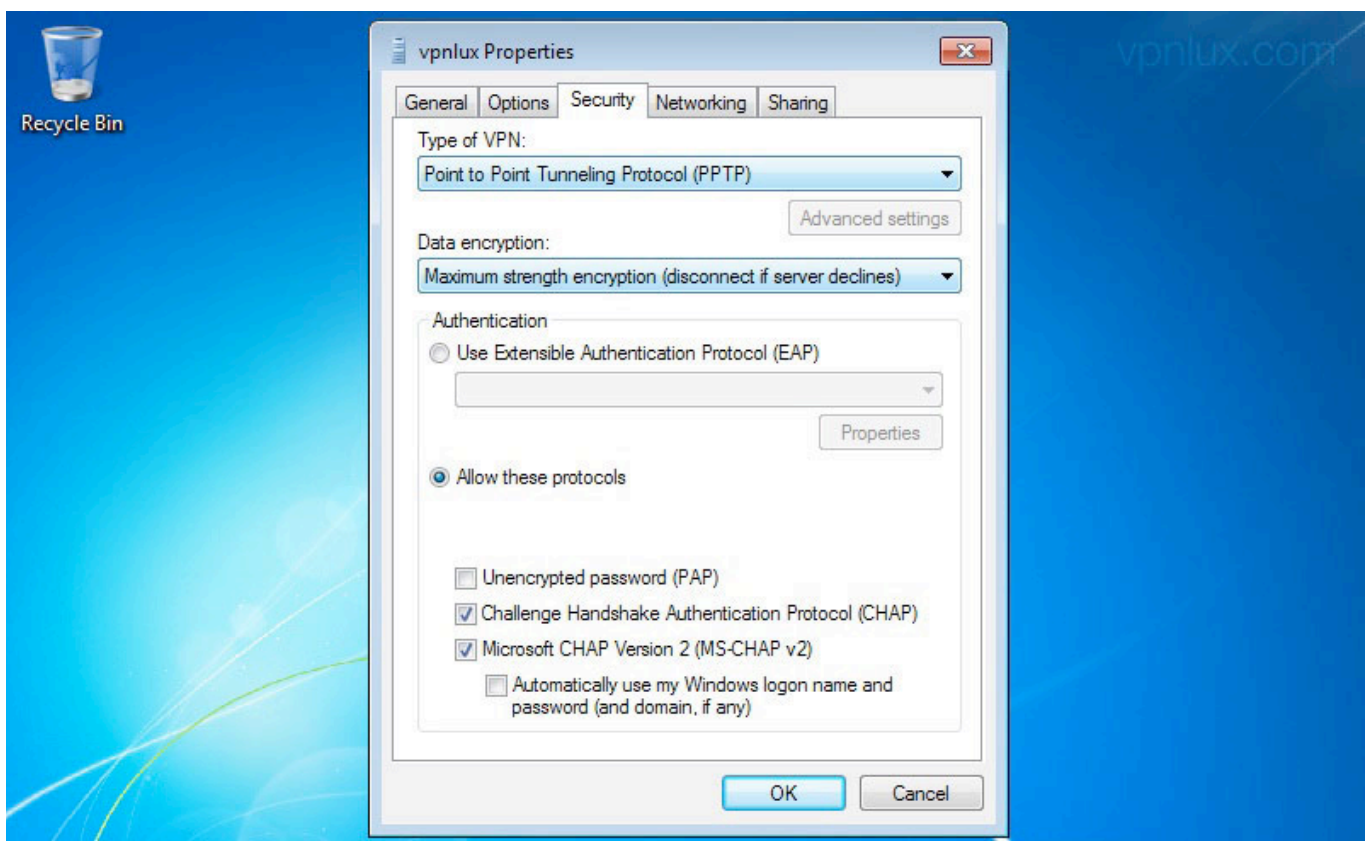
STEP 6. Enter your login info (look PPTP info text file in control panel). Select the **Remember this password** checkbox and click **Create**. **Close** the next window.



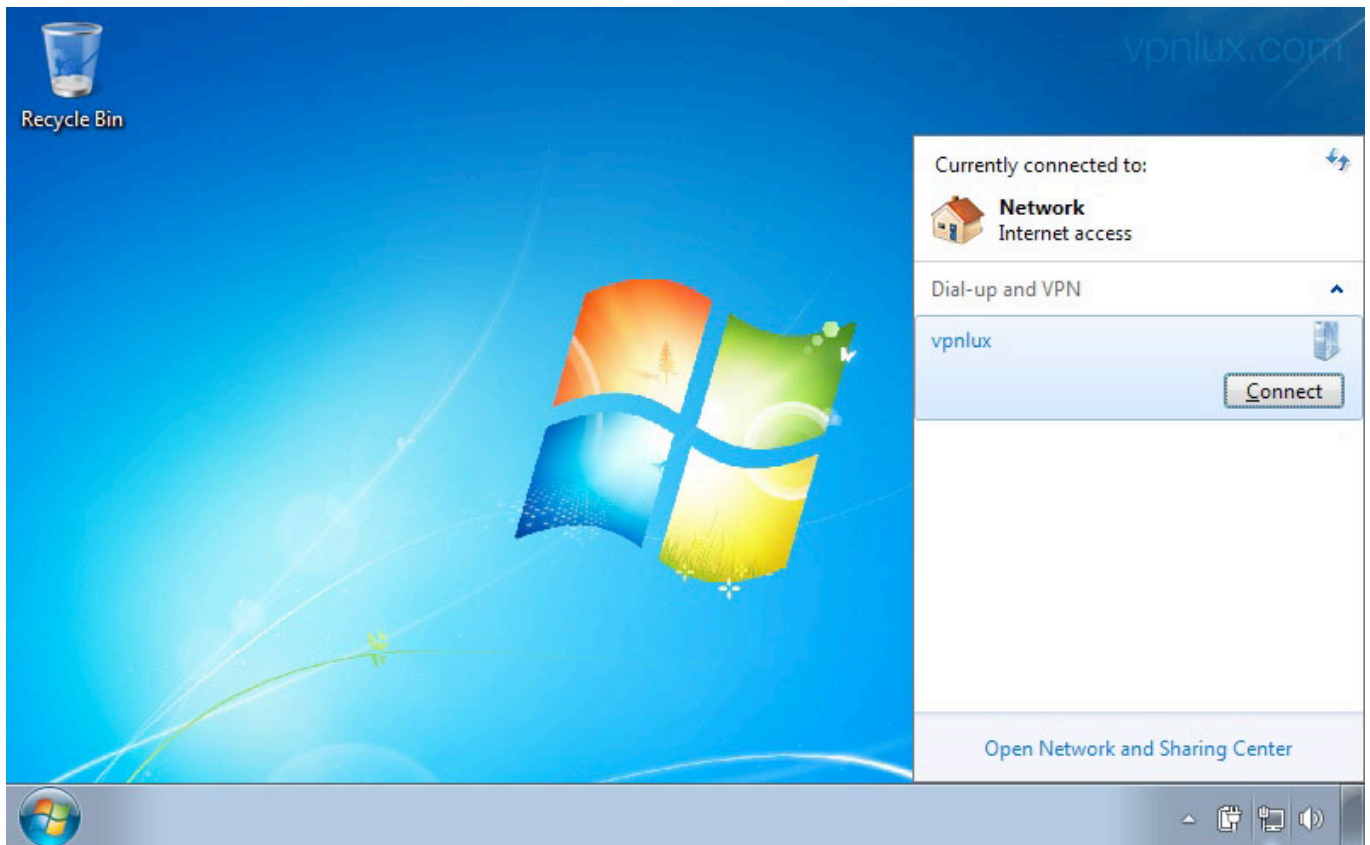
STEP 7. Click on the Network icon in system tray. Right click on the newly created VPN connection and click **Properties**



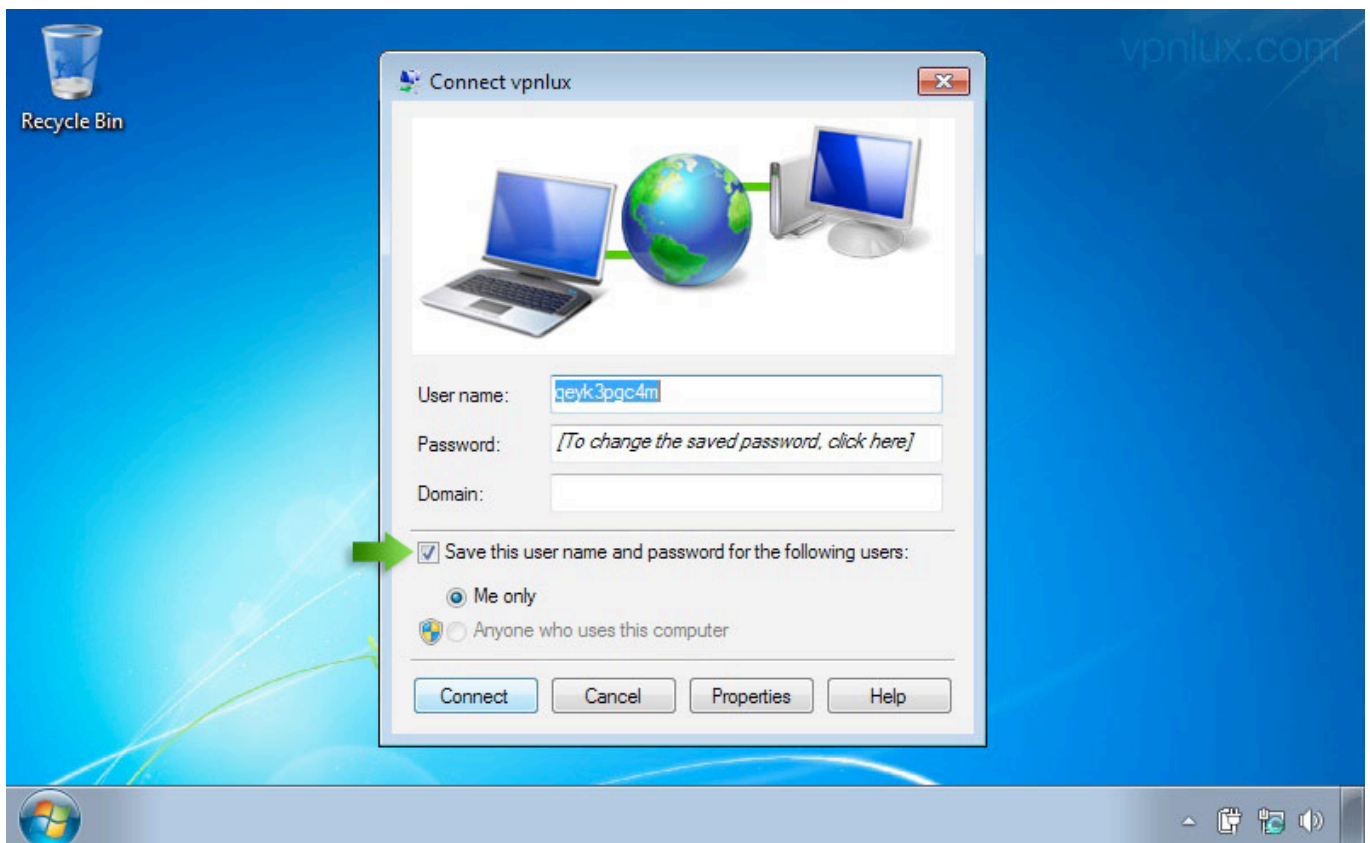
STEP 8. Select the **Security** tab and change the Type of VPN to **Point to Point Tunneling Protocol (PPTP)** and the Data encryption to **Maximum strength encryption**. Click **OK**



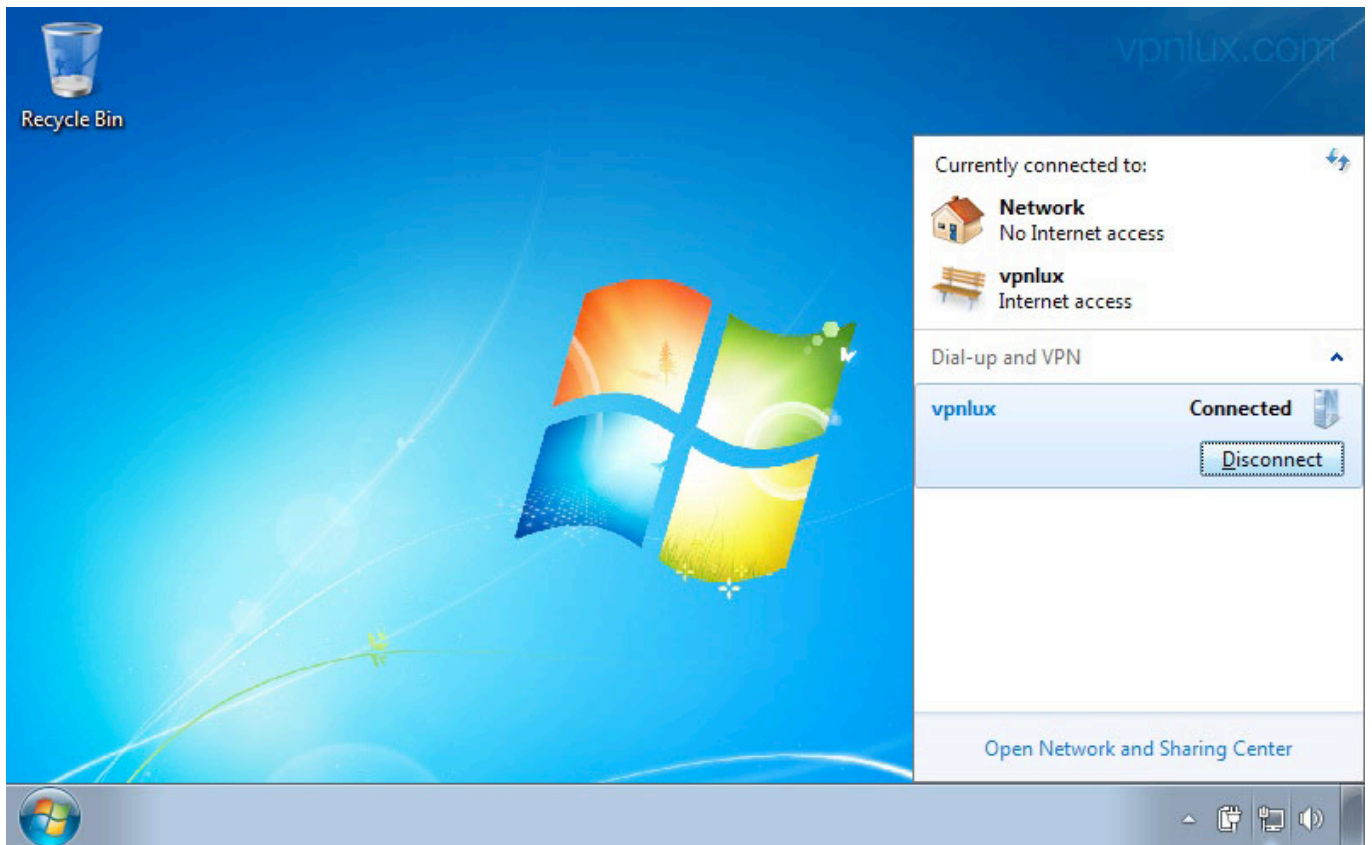
STEP 9. The VPN connection is ready. Now click on Network Icon in system tray, select your newly setup VPN connection and hit **Connect**



STEP 10. Click **Connect**. **NB!** *Newer use remember password option on public computers! If someone connects with your details when you online, you will be disconnected!*



STEP 11. Click on the Network icon in system tray and hit **Disconnect** when you finish

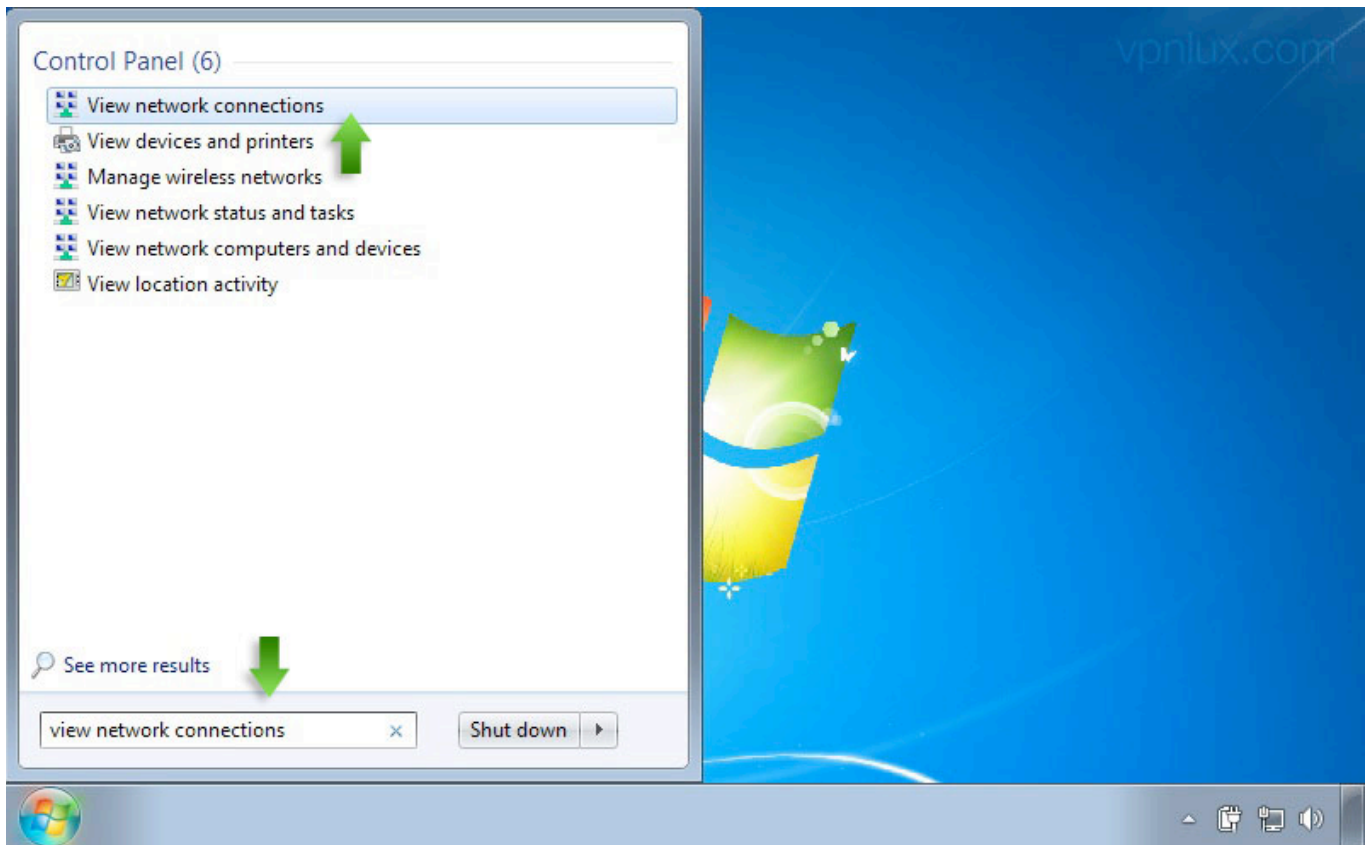


STEP 12. If you see the **Set Network Location** screen, click on **Public location**



DELETE VPN CONNECTION

STEP 1. Click on the **Start** button and type **view network connections** in the search field and hit **Enter**.



STEP 2. Right click on the VPN Connection and click **Delete**

